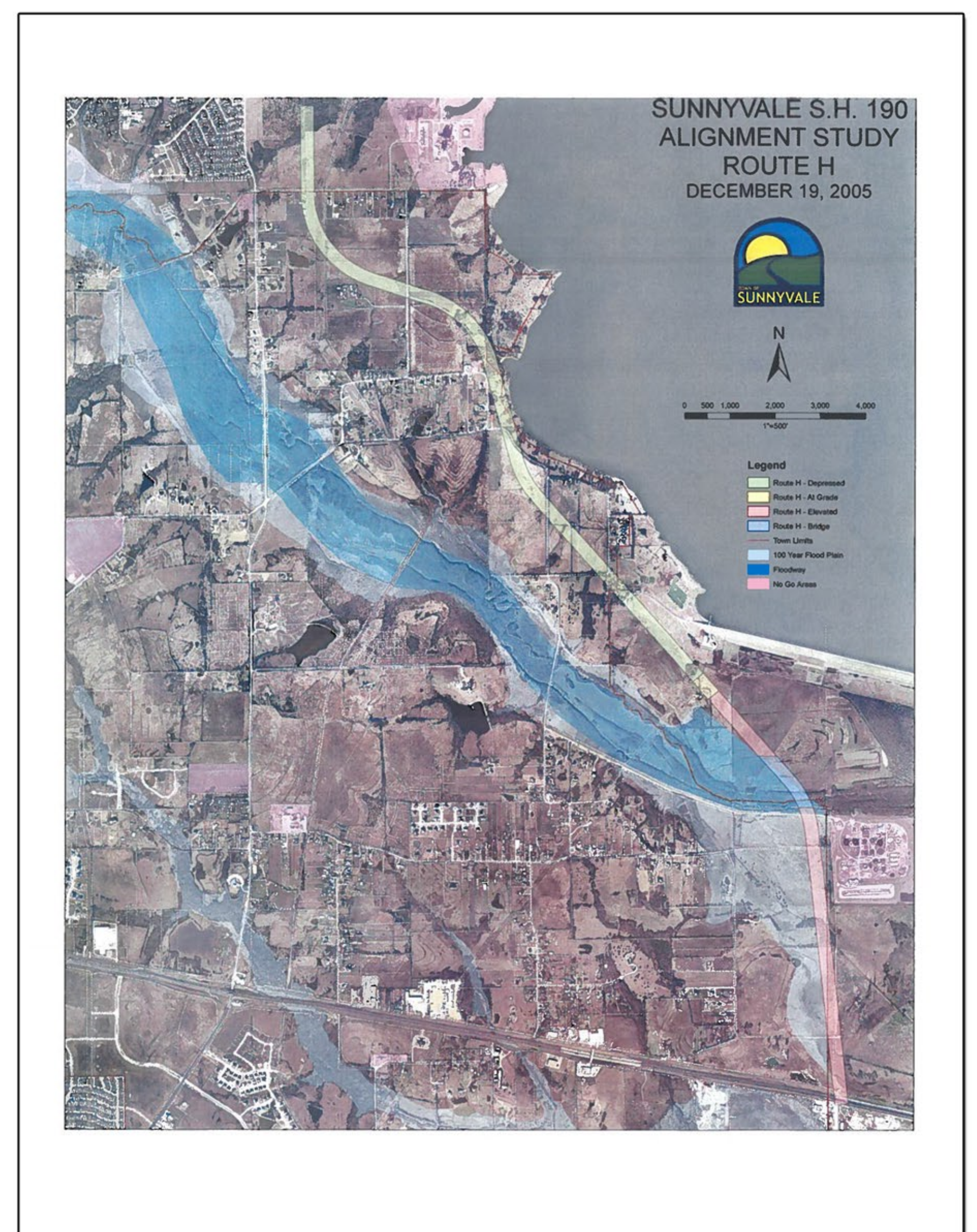
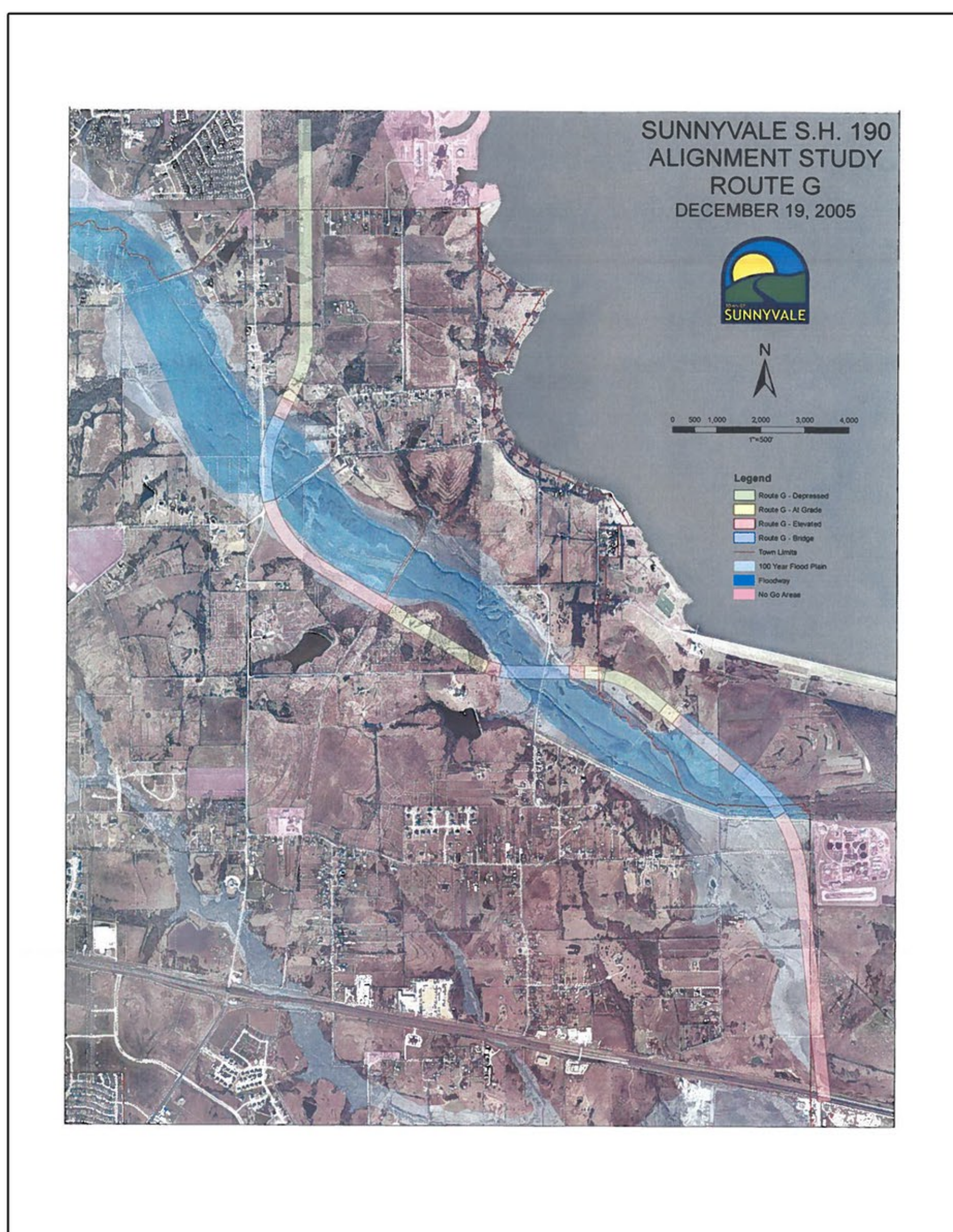
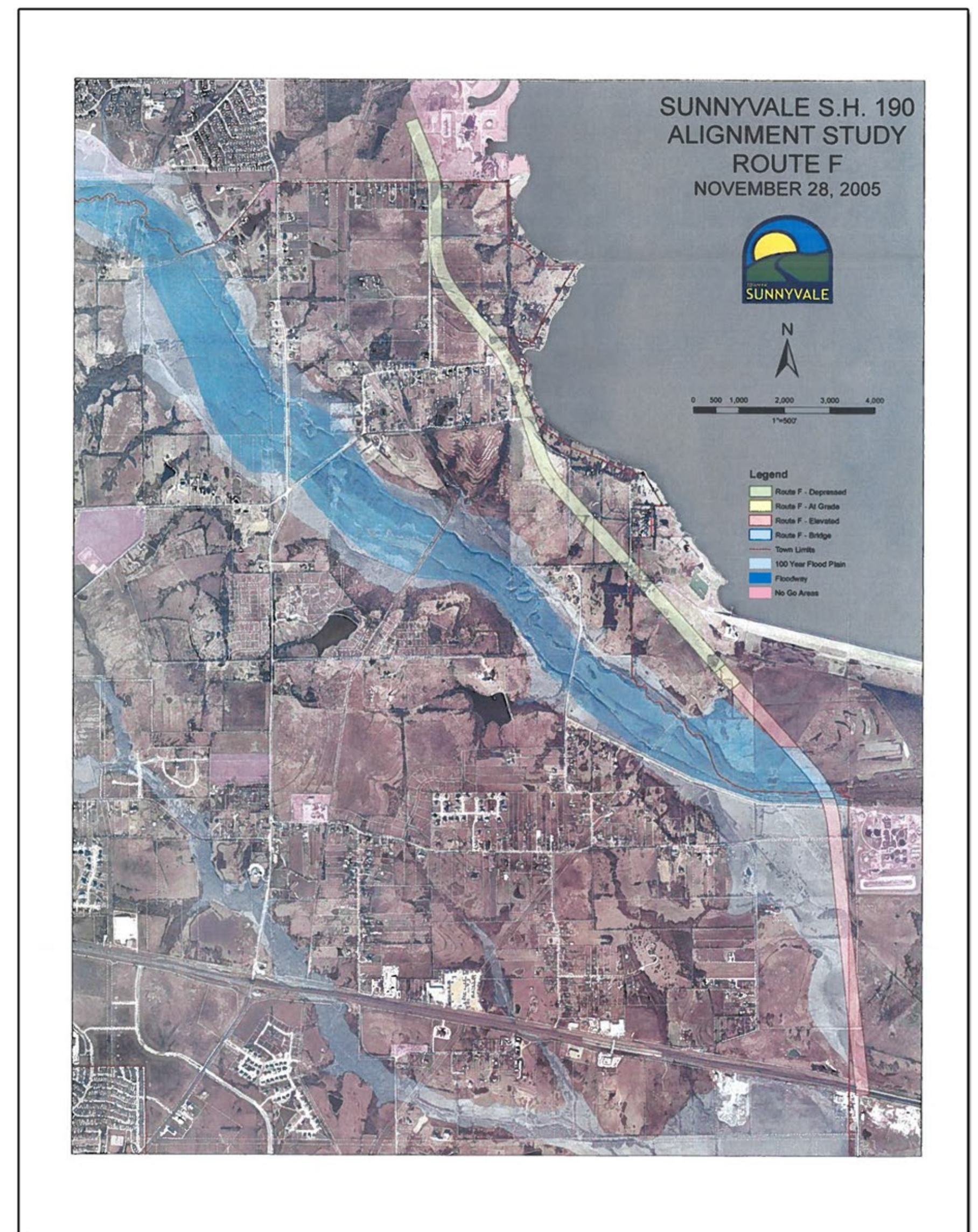
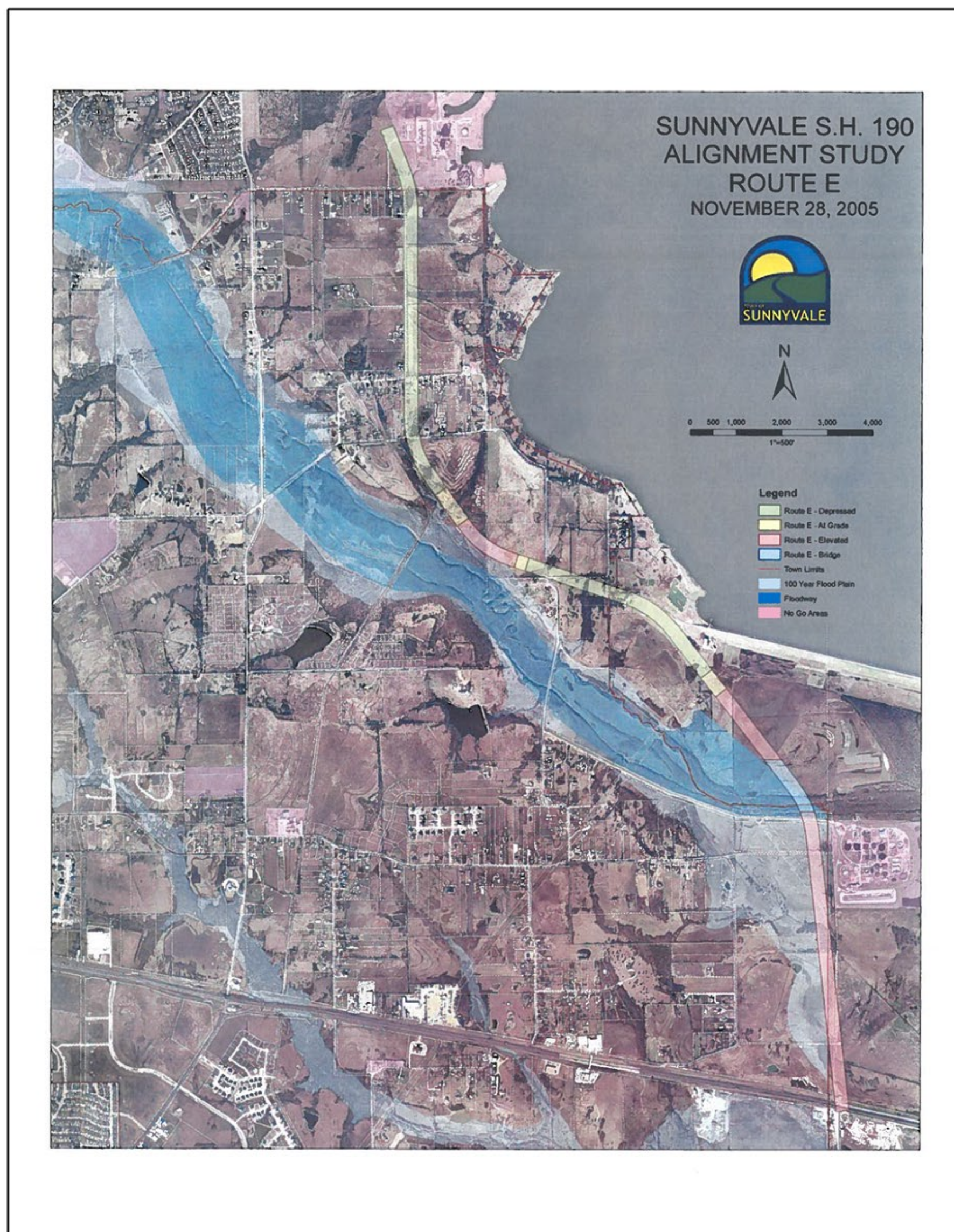


PROPOSED SH 190 ALIGNMENT DEVELOPMENT

TOWN OF SUNNYVALE ALIGNMENT STUDY ALTERNATIVES (2005 - 2006)



THE TOWN OF SUNNYVALE CONDUCTED A CORRIDOR STUDY IN 2005 WITHIN THE TOWN LIMITS TO EVALUATE POTENTIAL ALIGNMENT LOCATIONS. THE ALTERNATIVES SHOWN ABOVE WERE PREPARED AS A PART OF THAT STUDY.